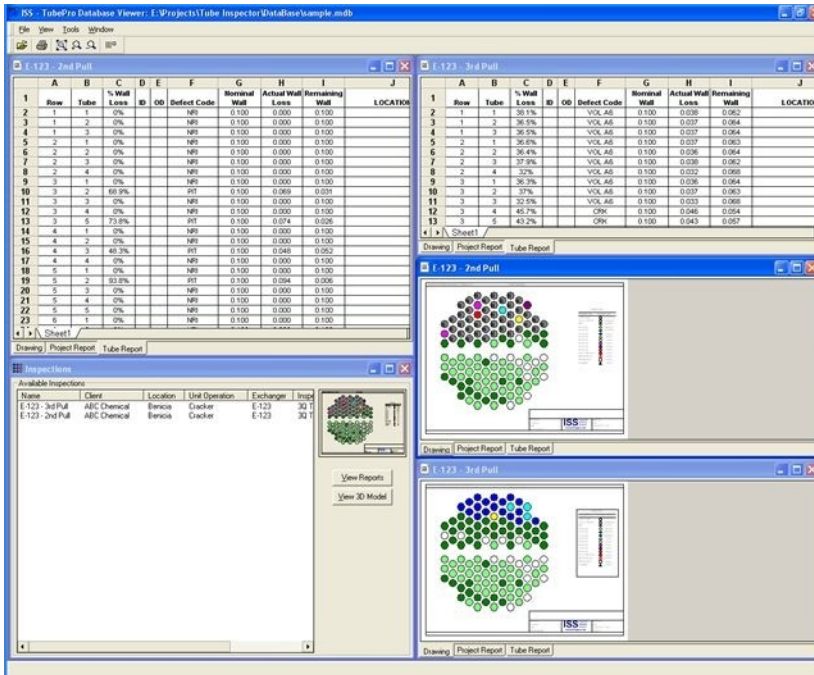


TubePro Database Management System

The ISS-Database Management System allows for central storage and retrieval of information regarding customers, testing equipment, instruments, drawings, reports and inspection data.

TubePro uses the database management system to store inspection reports, drawings, 3D models and tube defect data. For example, you can store all the inspections that were done for a client in the database. This database can then be provided to the client and they can open and view all the reports and drawings in the free ISS - Project Viewer.



The database is a fully Access MDB compatible database and can be searched and accessed by all database systems. All the information regarding the tubes and defects in an inspection can be searched and retrieved. The data can be used for trending calculations, historical reporting and any other uses. The TubePro system also includes a free 3D model viewer.

More Information

Visit **Inspection Software Systems** website www.ISSapps.com for more information or to request a trial version of TubePro.

Phone: (925)827-9689
 Email: Sales@ISSapps.com